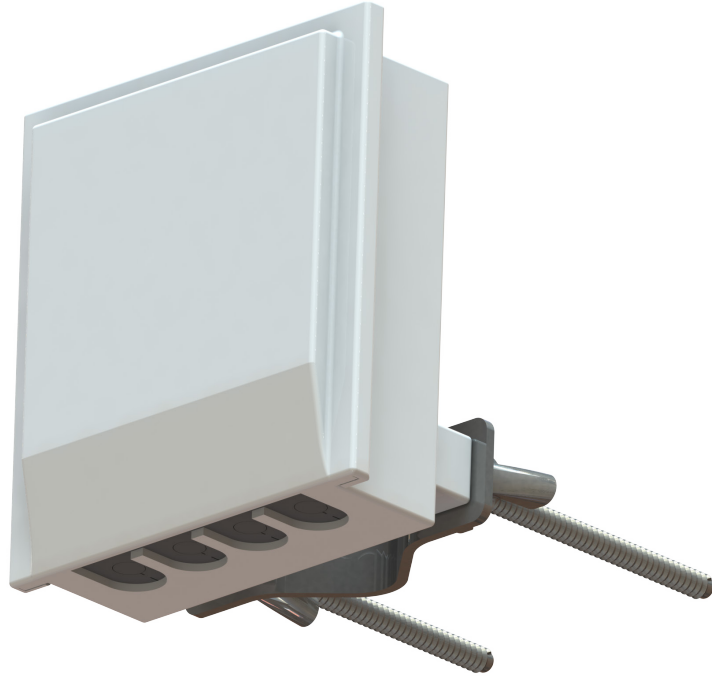




LigoWave

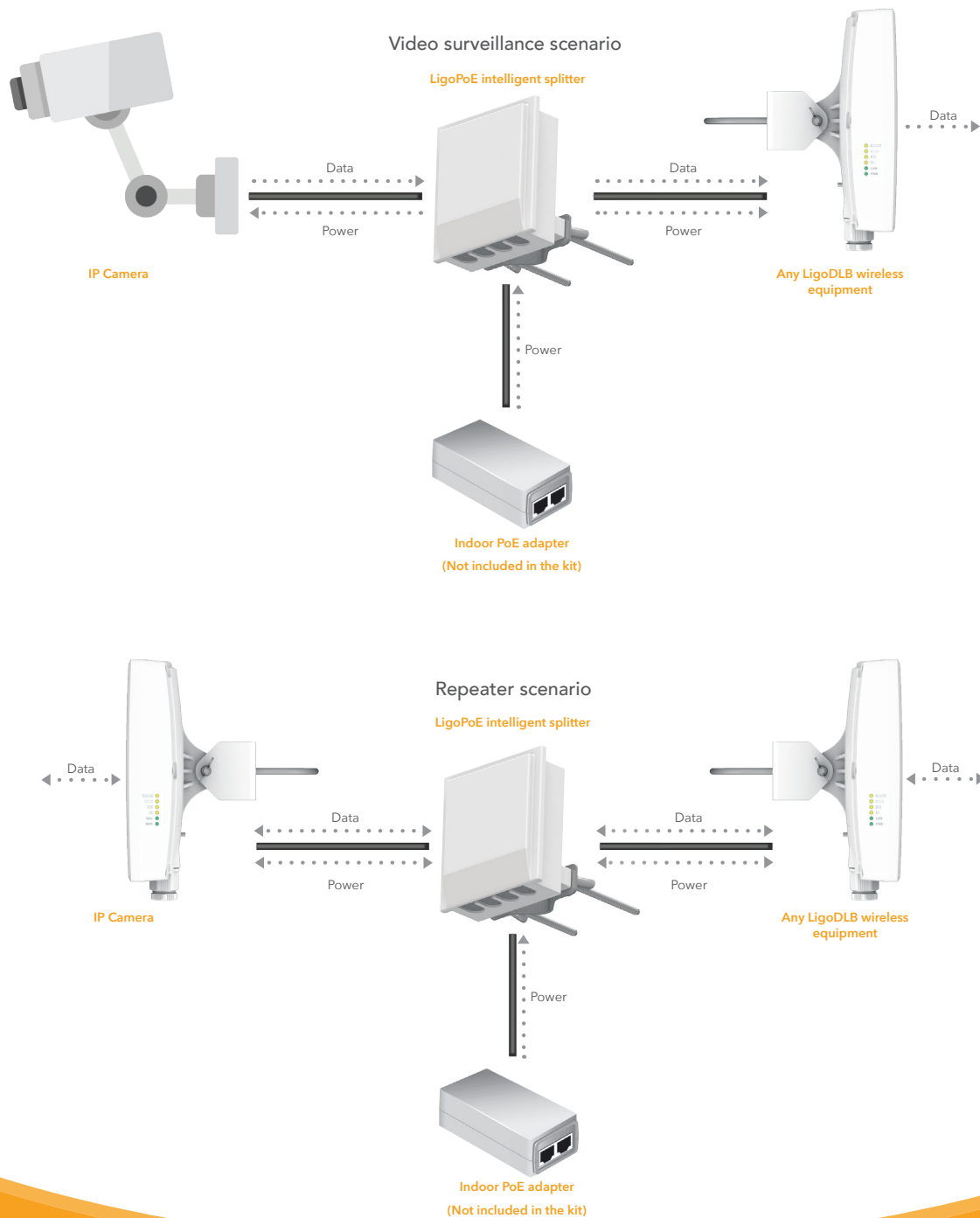


LigoPoE splitter

DATASHEET

Specifications

ESD and surge protection	15 kV ESD protection, 4 kV line to ground protection, 2 kV line to line protection
Interfaces	3 x 100 Base-T
Mounting	Wall and pole mounting (max pole width 50 mm or 2 inch)
Size (W x H x L)	85.7 x 91.5 x 43.9 mm (111.5 with mounting) (3.37 x 3.6 x 1.73 inch (4.39 with mounting)
Weight	140 g (0.31 lb)



LigoPoE Splitter